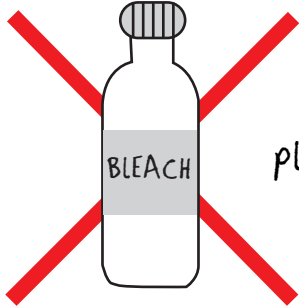


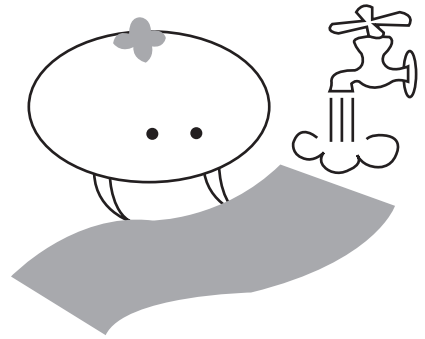
Tenugui Instruction

please do not wash your tenugui with light colored fabric or clothes,
because the color of the tenugui bleeds into the water

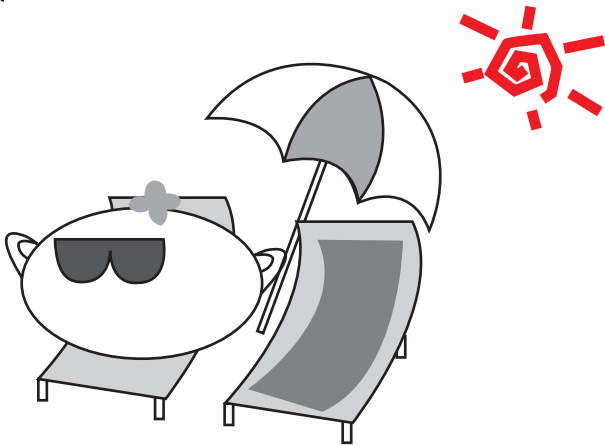


please do not use bleach or detergent when washing

the best way to wash the tenugui is by hand, using cold water



after you wash the tenugui ring it out and hang it
to dry in the shade



the color of the tenugui will fade over time especially after the first washes